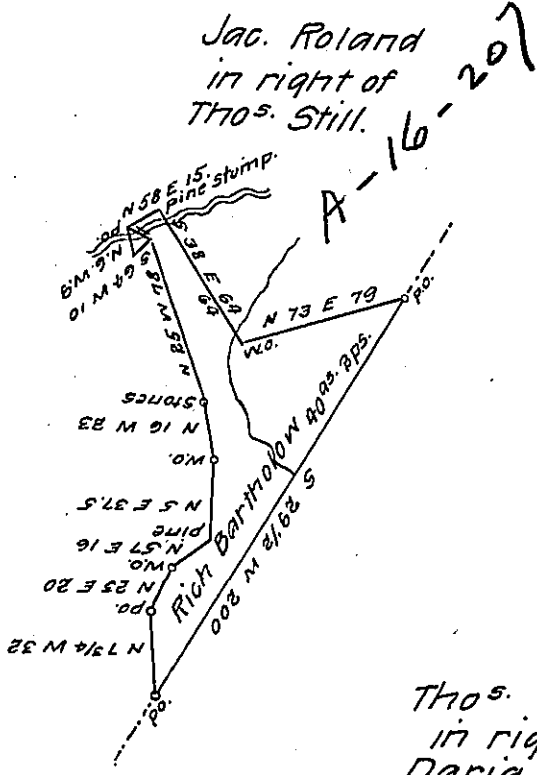


Williams
now
Geo. Bartholow



Jac. Roland
in right of
Thos. Still.

John Bartholow
in right of
Rich Bartholow

Thos. Leasure.
in right of
Daria Housare.

Situate on the Waters of Town Creek in Southampton township
Bedford County containing 40 acres 2 perches, and the usual allow-
ance of six per cent for roads &c. Surveyed the 14th May A.D. 1863.
in pursuance of a warrant granted to Richard Bartholow dated
the 5th December A. D. 1833

Sam^l Ketterman C.S.

To James P. Barr. Esqr.

S. G.

IN TESTIMONY that the above is a copy of the original remaining on file in
the Department of Internal Affairs of Pennsylvania, made
conformably to an Act of Assembly approved the 16th day of
February, 1833, I have hereunto set my Hand and caused
the Seal of said Department to be affixed at Harrisburg,
this twenty-fourth day of September 1907.

Secretary of Internal Affairs.